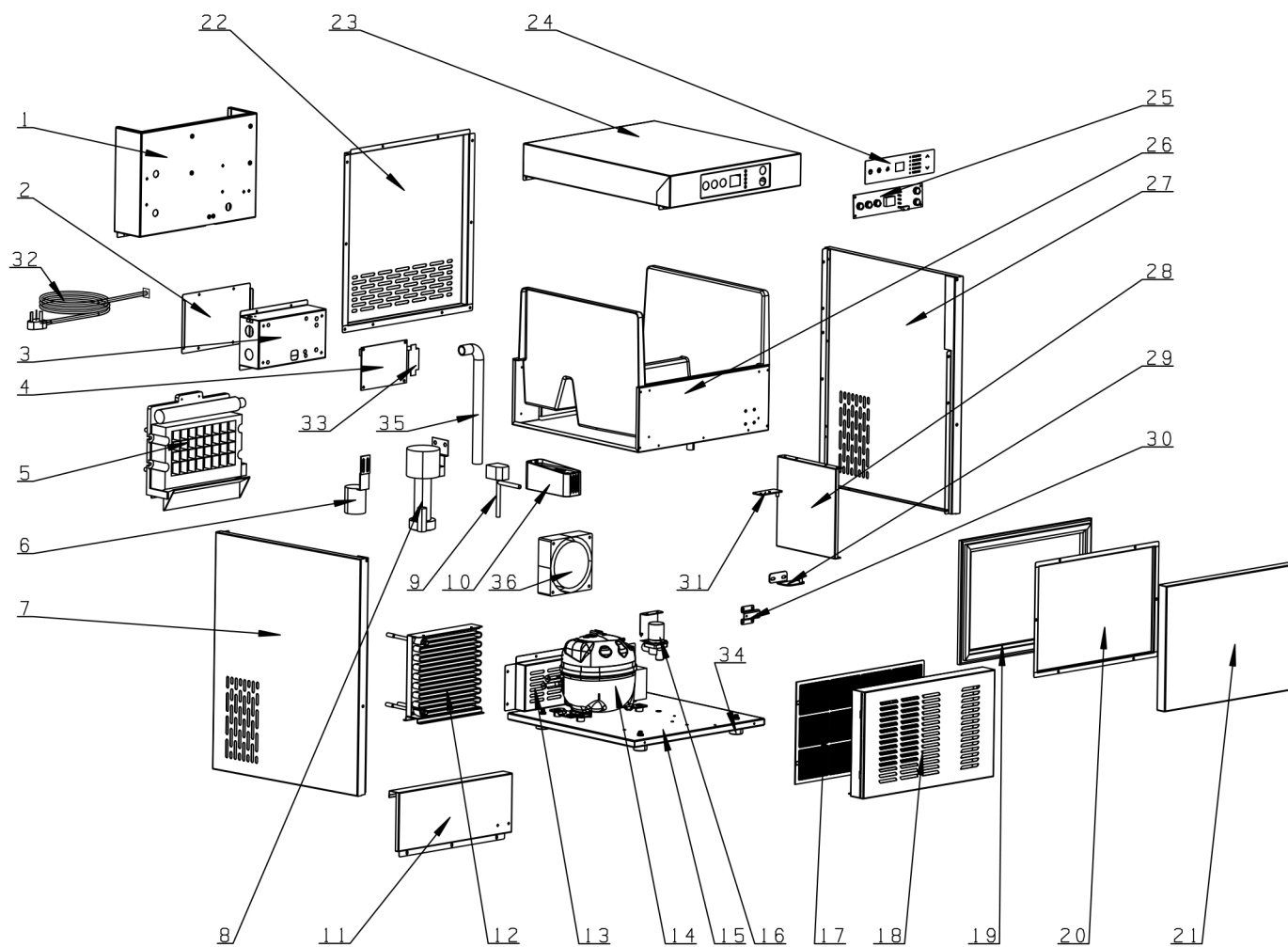


ZB - 20 ICE MAKER



- | | | |
|----|---------|--------------------------------------|
| 1 | - 冰模固定座 | Evaporator bracket |
| 2 | - 电器盒盖板 | Lid of PCB box |
| 3 | - 电器盒 | PCB box |
| 4 | - 控制板 | PCB |
| 5 | - 蒸发器 | Evaporator |
| 6 | - 水位开关 | Water level sensor |
| 7 | - 左侧板 | Side panel (Left) |
| 8 | - 水泵 | Water pump |
| 9 | - 电磁阀 | Solenoid valve |
| 10 | - 杀菌盒 | Anti-microbial system |
| 11 | - 前挡板 | Front cover panel for icebin |
| 12 | - 冷凝器 | Condenser |
| 13 | - 后板 | Back grid panel |
| 14 | - 压缩机 | Compressor |
| 15 | - 底板 | Compressor baseplate |
| 16 | - 排水阀 | Water drainout valve |
| 17 | - 防尘网 | Air filter |
| 18 | - 通风板 | Front panel |
| 19 | - 密封条 | Gasket |
| 20 | - 门板盖板 | Rear plate of the door |
| 21 | - 门板 | Door |
| 22 | - 后背板 | Rear Panel |
| 23 | - 顶盖板 | Top panel |
| 24 | - 显示板面贴 | Display operation stiker |
| 25 | - 显示板 | Display board |
| 26 | - 内胆 | Icebin |
| 27 | - 右侧板 | Side panel (left) |
| 28 | - 挡风板 | Wind deflector and bin support plate |
| 29 | - 中间铰链 | Middle hinge |
| 30 | - 铰链支架 | Hinged bracekt |
| 31 | - 上铰链 | Upper hinge |
| 32 | - 电源线 | Power cord |
| 33 | - 变压器 | Transformers |
| 34 | - 底角 | Base foot leg |
| 35 | - 水泵出口管 | Water feeding pipe |
| 36 | - 冷凝风机 | Condenser fan |